

# SGC 110 Insect Incubation Chamber



The new SGC 110 Insect Incubation Chamber provides a solution to Entomologist's needs to study and store Drosophila, Bees & any other insects within a controllable environment. The SGC 110 features:

- Individually controllable High Frequency 'insect friendly' shelf lighting
- Flexible shelving options providing up to 4.5m<sup>2</sup> working area
- Excellent temperature uniformity
- Wide temperature range • Optional Humidity
- Excellent space-efficiency; minimal footprint size

The SGC 110 offers a wide temperature range of -2°C to +40°C with the lights off and +5°C to 35°C with the lights on, and a temperature uniformity of +/- 0.3°C.

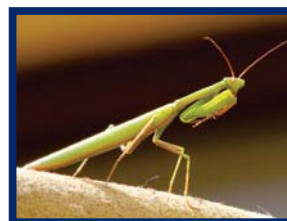
An optional humidifier capable of producing up to 80% RH is also available, as is a carbon filter in the airflow to control odour emissions.

Providing up to 5 shelves the SGC 110 gives a working area of 4.5m<sup>2</sup>.

Each shelf is available with an optional bank of High Frequency lighting which minimises the effects of stroboscopic stress on insects.

Lighting is distributed uniformly across the shelves and individually controllable for each shelf, variable from an intensity of 10% to 100%.

The SGC 110 also has a wide variety of specimen protection features.



## Shelving & Lighting Options

One shelf:	12 x 36W fluorescent tubes per shelf Max intensity approx 620 $\mu\text{mol m}^{-2\text{s}^{-1}}$ @ 150mm below tube @ 25°C Max height between shelves 1300mm
Two shelves:	6 x 36W fluorescent tubes per shelf Max intensity approx 290 $\mu\text{mol m}^{-2\text{s}^{-1}}$ @ 150mm below tube @ 25°C Max height between shelves 623mm
Three shelves:	4 x 36W fluorescent tubes per shelf Max intensity approx 170 $\mu\text{mol m}^{-2\text{s}^{-1}}$ @ 150mm below tube @ 25°C Max height between shelves 400mm
Four Shelves:	3 x 36W fluorescent tubes per shelf Max intensity approx 140 $\mu\text{mol m}^{-2\text{s}^{-1}}$ @ 150mm below tube @ 25°C Max height between shelves 250mm
Five shelves:	2 x 36W fluorescent tubes per shelf Max intensity approx 100 $\mu\text{mol m}^{-2\text{s}^{-1}}$ @ 150mm below tube @ 25°C Max height between shelves 174mm

Temperature Range:	-2°C to +40°C lights off +5°C to +35°C lights on
Temp. Stability:	+/-0.3°C fluctuation
Humidity (optional):	60% - 80% RH – temperature dependent Low energy ultrasonic humidity generator & capacitive humidity sensor

## Chamber size

Interior:	1,300mm (w) x 690mm (d) x 1,480mm (h)
User access:	Two lockable, front opening doors, sized 705mm (w) x 16,00mm (h)
Volume:	1100 litres nominal
External:	1420mm (w) x 800mm (d) x 1980mm (h)

## Construction

Interior:	Corrosion resistant stainless steel
Exterior:	Painted, protected steel with a textured finish
Mobility:	Lockable castors enable the chamber to be moved
Safety:	User settable hi/low temperature alarms with remote contact. Overheat protection Low temperature protection. Audible & visual alarm indicators

Service Requirements: 230v, 50Hz, 13amp  
All figures subject to alteration without notice

Water Requirements: De-mineralised water  
(humidity option only)



**WEISS ENET INDUSTRIETECHNIEK BV**  
T 0344-670400  
E [info@weissenet.nl](mailto:info@weissenet.nl)  
[www.weissenet.nl](http://www.weissenet.nl)